






5 Macfarlane Street TORQUAY VIC

3  2  2 

Positioned in the highly sought-after Quay 2 Estate, this custom-built contemporary home by renowned Torquay builder Hudson Ridge offers an unparalleled lifestyle for families. Just a short stroll from the local Farmers Market, and within easy reach of the Rocket Ship Playground, Skate Park, and Dune's Shopping Centre, it is also zoned for Surf Coast High School, truly a family-friendly location.

Exquisitely modern in both design and décor, the home offers a seamless luxury that perfectly complements your furnishings. From elegant oak flooring to sophisticated grey carpeting with delicate white speckles, and pristine bedding harmonising with crisp white walls and refined plantation shutters, every detail exudes understated opulence. Each element has been thoughtfully curated to create a space that is both luxurious and effortlessly timeless.

Upon arrival, the wraparound front patio invites you to pause and enjoy a serene morning coffee. Step through the impressive tall front door into an extended lounge and wide, welcoming hallway. Immediately to your left, the

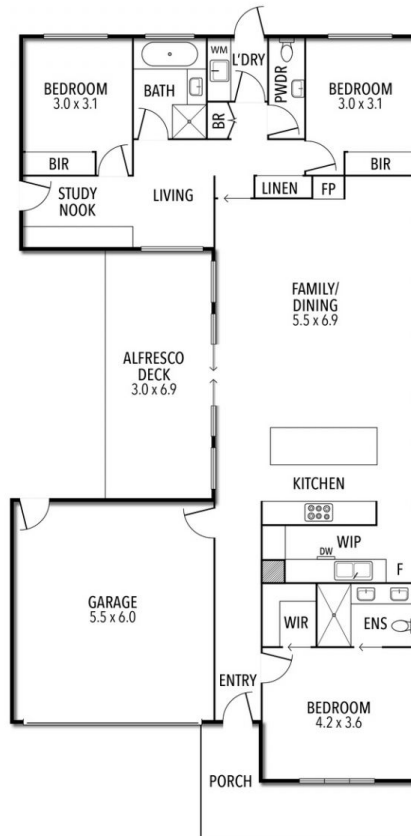
[For full version visit the website](https://www.elizagoldproperty.com.au)

Type : House
Land Size : 392 sqm
View : <https://www.elizagoldproperty.com.au/8617931>



Eliza Gold
0478 782 808

5 MACFARLANE STREET, TORQUAY



THE ABOVE PLAN IS AN ARTIST'S IMPRESSION ONLY, IT INCLUDES ELEMENTS THAT ARE FOR DISPLAY PURPOSES ONLY AND MAY NOT BE TO SCALE. LANDSCAPING SHOWN IS INDICATIVE ONLY. DIMENSIONS ARE APPROXIMATE.